

Endorsement on Back
 Jefferson County
 Nelson Strong
 925.49⁶⁵/₁₀₀ allowance

65 Ps.
 646.120

Ret'd & 2^d Jany. 1866

H. 61. 104.

Patent cancelled by order of Board
 of Property of Sept. 16. 1897 to correct
 names of Patentee, and new patent
 issued in lieu thereof to I.C. Wynkoop
 dated Oct. 1. 1897.

H. 75 - 304.

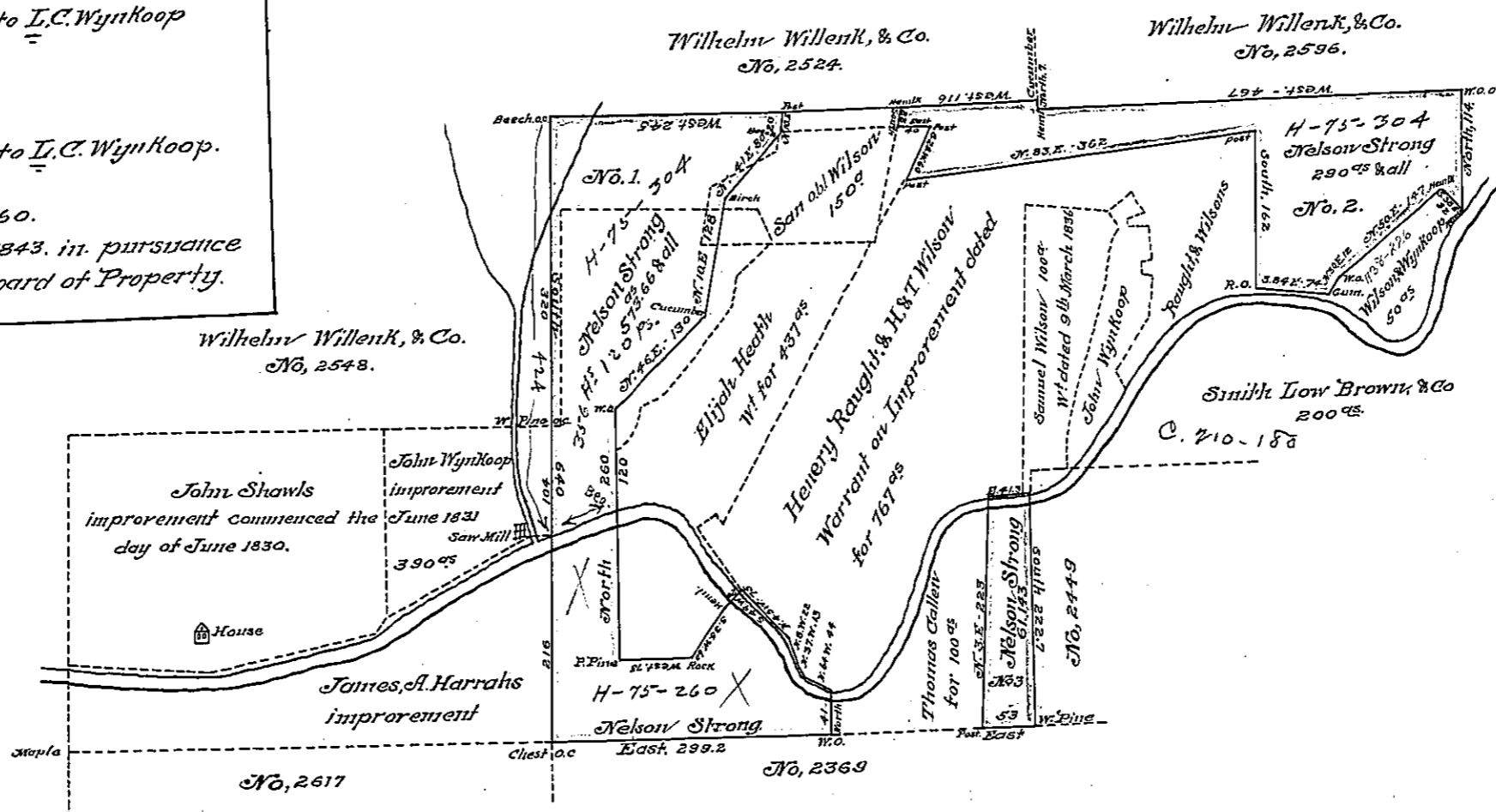
204. No. 142 Ps.

Patented Aug. 7. 1896 to I.C. Wynkoop.
 et al.

H. 75. 260.

Accepted 20th Nov^r 1843. in pursuance
 of a Minute of the Board of Property.
 No. 5

Endorsement on Back
 John Wynkoop Carate the acceptance
 the Return of the within Survey alleging
 that the title to part of said land is vested
 in him by virtue of his Improvement.
 John M^cGlaughlin D.S.



Surveyed for Nelson Strong on the 14th day of November A.D. 1837. Three pieces or parcels of land No 1, 2 & 3 Containing in all Nine hundred, and twenty five acres and forty nine perches and allowance of Six per Cent for Roads, &c. No One Contains five hundred and Seventy three acres and Sixty six perches No two Contains two hundred and Ninety acres - No Three South of the Clarion Contains Sixty one acres and One hundred and forty three perches. Situate on and adjoining the Clarion River in Barnette Township in the County of Jefferson and last Purchase made of the Indians East of the Allegheny River and Conwango Creek.) In Pursuance of a Warrant granted to Nelson Strong dated at Harrisburg the Eleventh day of January A.D. 1837 for one Thousand acres.

John I. Thompson (late D.S)

I have Examined and do approve of the above Survey and Return
 the 11th day of Jany. A.D. 1840
 To Jacob Sallade
 Surveyor General Pa.
 John M^cGlaughlin D.S.

In Testimony, That the above is a copy of the original remaining on file in the Department of Internal Affairs of Pennsylvania, made conformably to an Act of Assembly approved the 16th day of February 1833, I have hereunto set my Hand and caused the Seal of said Department to be affixed at Harrisburg the first day of September 1910.

Henry Howell,
 Secretary of Internal Affairs.